

# KOD -Plus- Neo

KOD-401 200 U 200 reactions

Store at -20°C

## Contents

- 
- [1] **Introduction**
  - [2] **Components**
  - [3] **Quality testing**
  - [4] **Primer design**
  - [5] **Cloning of PCR products**
  - [6] **Protocol**
    - 1. Standard reaction setup
    - 2. Cycling conditions
  - [7] **Examples**
  - [8] **Troubleshooting**
  - [9] **References**
  - [10] **Related products**
- 

## CAUTION

All reagents in this kit are intended for research purposes. Do not use for diagnostic or clinical purposes. Please observe general laboratory practices and safety precautions while using this kit.

---

### JAPAN

TOYOBO CO., LTD.  
Tel(81)-6-6348-3888  
www.toyobo.co.jp/e/bio  
tech\_osaka@toyobo.jp

### CHINA

TOYOBO Bio-Technology, CO., LTD.  
Tel(86)-21-58794900.4140

**FOR RESEARCH USE ONLY. NOT FOR HUMAN OR DIAGNOSTIC USE.**

## [1] Introduction

### Description

KOD -Plus- Neo is based on a DNA polymerase from the hyperthermophilic Archaeon *Thermococcus kodakaraensis* KOD1<sup>1)2)</sup>. This polymerase exhibits excellent PCR fidelity because of its efficient 3'→5' exonuclease activity (proof reading activity). This product contains a unique “elongation enhancer” that suppresses the “plateau effect” produced by conventional PCR. Therefore, this reagent exhibits greater amplification efficiency and elongation capability compared to the previous version of KOD -Plus- (Code No. KOD-201).

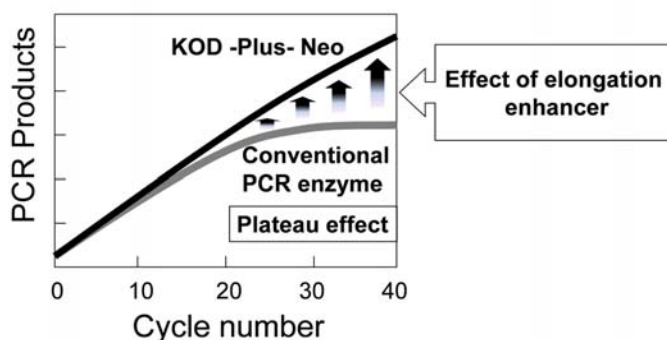
Moreover, this enzyme requires only 30 sec/kb for the PCR extension step. This facilitates the long range PCR.

This enzyme contains two anti-KOD DNA polymerase antibodies that inhibit polymerase and 3'→5' exonuclease activity, thus allowing for Hot Start PCR<sup>3)</sup>. This polymerase generates blunt-end PCR products due to 3'→5' exonuclease (proof-reading) activity.

### Features

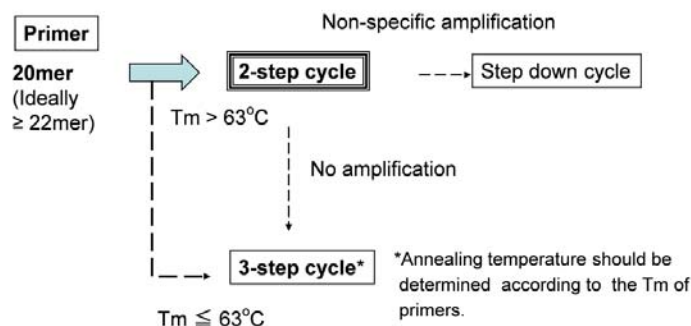
-KOD -Plus- Neo exhibits 80-fold greater PCR fidelity than Taq DNA polymerase.

-“Elongation enhancer” enables greater amplification efficiency and elongation capability (up to 24 kb from human genomic DNA) compared to conventional PCR.



-Requires only 30 sec/kb for the PCR extension step.

-2-step cycle conditions can be used for amplification using  $\geq 20$  mer primers (melting temperatures,  $T_m > 63^\circ\text{C}$ ).



\*The Nearest Neighbor method is recommended to calculate the  $T_m$  of primers. The  $T_m$  values in this manual were calculated using this method with the following parameters.

$\text{Na}^+$  concentration: 50 mM

Oligonucleotide concentration: 0.5  $\mu\text{M}$

## [2] Components

KOD -Plus- Neo (1.0 U/ $\mu\text{l}$ )*	200 $\mu\text{l}$ x 1
10 x PCR Buffer for KOD -Plus- Neo	1 ml x 1
25 mM $\text{MgSO}_4$	1 ml x 1
2 mM dNTPs	1 ml x 1

\*The enzyme solution contains anti-KOD DNA polymerase antibodies that neutralize polymerase and 3'→5' exonuclease activity.

## [3] Quality Testing

Quality control was performed by amplifying the human  $\beta$ -globin gene (17.5 kb).

## [4] Primer Design

-Primers should be 22–35 bases with  $T_m > 63^\circ\text{C}$ .

-Optimal GC content of primers is 45–60%. Ideal GC contents of the 5' half and the 3' half are 60–70% and 40–50%, respectively.

-Primers for long target amplification should be 25-35 bases with  $T_m > 65^\circ\text{C}$ .

-Primers containing inosine cannot be used.

-The  $T_m$  of primers should be calculated using the Nearest Neighbor method. The  $T_m$  values in this manual were calculated using this method with the following parameters.

$\text{Na}^+$  concentration: 50 mM

Oligonucleotide concentration: 0.5  $\mu\text{M}$

## [5] Cloning of PCR products

-KOD -Plus- Neo generates blunt-end PCR products due to its 3'→5' exonuclease (proof-reading) activity. Therefore, PCR products can be cloned according to blunt-end cloning methods.

-PCR products of KOD -Plus- Neo should be purified prior to restriction enzyme treatments. The 3'→5' exonuclease activity of KOD DNA polymerase remains at the end of the PCR reaction.

-The dedicated TA cloning kit “TARget clone™ -Plus- (Code No. TAK-201)” is recommended for the cloning of blunt end PCR products produced by KOD DNA polymerase (see [10] Related product).

## [6] Protocol

### 1. Standard reaction setup

The following procedure is designed for use with the components provided in this kit. Before mixture preparation, all components should be completely thawed, except for the enzyme solution.

Component	Volume	Final Concentration
10x Buffer for KOD -Plus- Neo	5 $\mu$ l	1x
2 mM dNTPs*	5 $\mu$ l	0.2 mM each
25 mM MgSO <sub>4</sub>	3 $\mu$ l	1.5 mM
10 pmol/ $\mu$ l Primer #1	0.75–1.5 $\mu$ l	0.15–0.3 $\mu$ M
10 pmol/ $\mu$ l Primer #2	0.75–1.5 $\mu$ l	0.15–0.3 $\mu$ M
Template DNA	X $\mu$ l	{ Genomic DNA $\leq$ 200 ng/50 $\mu$ l Plasmid DNA $\leq$ 50 ng/50 $\mu$ l cDNA $\leq$ 200 ng (RNA equiv.)/50 $\mu$ l
PCR grade water	Y $\mu$ l	
KOD -Plus- Neo (1.0 U/ $\mu$ l)	1 $\mu$ l	1.0 U/50 $\mu$ l
Total reaction volume	50 $\mu$ l	

\*Do not use dNTPs from other kits or companies.

#### Notes:

-Optimal primer concentration is 0.3  $\mu$ M. In the case of long target ( $\geq$ 10 kb), a reduced primer concentration (0.15  $\mu$ M) may give more effective amplification.

-The addition of DMSO (final conc. 2–5%) is beneficial for the amplification of GC-rich targets. Decreased PCR fidelity does not occur in the presence of DMSO (See step 2, Cycling conditions).

-Contaminating RNA in cDNA or genomic DNA inhibits the PCR reaction by chelating Mg<sup>2+</sup>. PCR should be performed using template DNA containing <200 ng RNA.

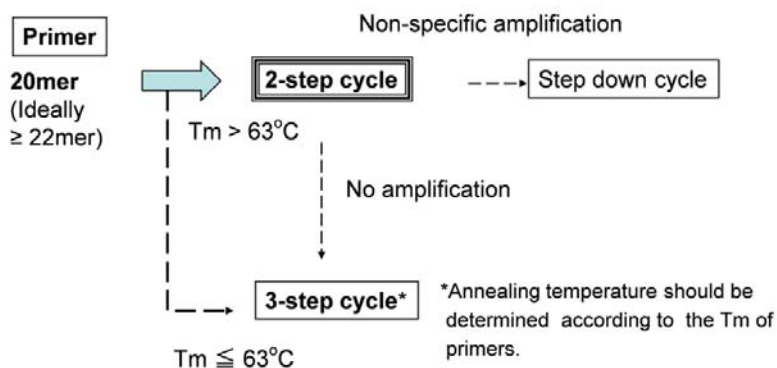
-Quality of template DNA should be checked by electrophoresis. The length and purity of template DNA affects amplification results.

-Templates containing uracil cannot be used for amplification.

-For PCR reactions, thin-wall tubes are recommended. A total reaction volume of 50  $\mu$ l is also recommended.

## 2. Cycling conditions [Important]

Two-step cycle conditions with primers  $\geq 20$  mer,  $T_m > 63^\circ\text{C}$  are recommended for effective amplification using KOD -Plus- Neo.



### A. 2-step cycle

If the  $T_m$  value of the primer is over  $63^\circ\text{C}$ , a 2-step cycle is recommended.

< 2-step cycle >	
Pre-denaturation:	94°C, 2 min
Denaturation:	98°C, 10 sec
Extension:	68°C, 30 sec/kb

25-45 cycles

#### Notes:

-For amplification using low copy templates or amplification of long targets ( $>10$  kb), longer extension times (up to 1min/kb) or higher Mg concentrations (up to 2 mM final concentration) may increase the yield.

-The addition of DMSO (final conc. 2–5%) may be beneficial for the amplification of GC-rich targets. The concentration of DMSO used should be determined according to the  $T_m$  of the primers.

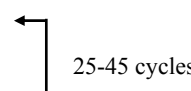
<25 mer or  $T_m < 68^\circ\text{C}$ : up to 2%  
 $\geq 25$  mer or  $T_m \geq 68^\circ\text{C}$ : up to 5%

-In the case of amplification failure a 3-step cycle may be required.

## B. 3-step cycle

When the  $T_m$  of primers are less than 63°C, a 3-step cycle should be used.

< 3-step cycle >	
Pre-denaturation:	94°C, 2 min
Denaturation:	98°C, 10 sec
Annealing:	[ $T_m$ ] <sup>o</sup> C, 30 sec
Extension:	68°C, <b>30sec/kb</b>



### Notes:

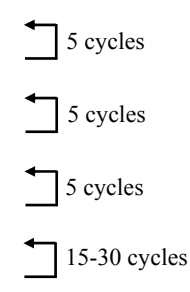
-Amplification using low copy templates or amplification of long targets (>10 kb) may be improved by increasing the extension time (up to 1 min/kb) or Mg concentration (up to 2 mM final concentration).

-The addition of DMSO (final conc. 2–5%) might be beneficial for the amplification of GC-rich targets.

## C. Step-down cycle

If non-specific amplification is observed with 2-step and 3-step cycle conditions (extra or smeared bands observed after electrophoresis of PCR product), then the step-down cycle may improve specificity.

< Step-down cycle >	
Pre-denaturation:	94°C, 2 min
Denaturation:	98°C, 10 sec
Extension:	74°C, <b>30 sec/kb</b>
Denaturation:	98°C, 10 sec
Extension:	72°C, <b>30 sec/kb</b>
Denaturation:	98°C, 10 sec
Extension:	70°C, <b>30 sec/kb</b>
Denaturation:	98°C, 10 sec
Extension:	68°C, <b>30 sec/kb</b>
Extension:	68°C, 7 min



### Notes:

-Amplification from low copy templates or amplification of long targets (>10 kb), may be improved by increasing the extension time (up to 1 min/kb) or the Mg concentration (up to 2 mM final concentration).

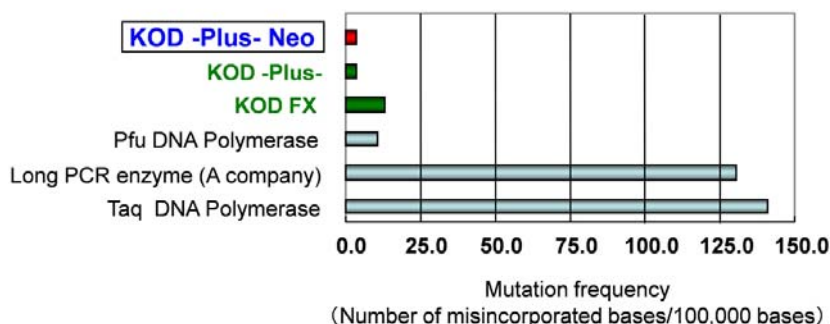
-The addition of DMSO (final conc. 2–5%) might be effective for the amplification of GC-rich targets. The DMSO concentration should be determined according to the Tm of primers.

<25 mer or Tm <68°C: up to 2%  
 ≥25 mer or Tm ≥68°C: up to 5%

[7] Examples

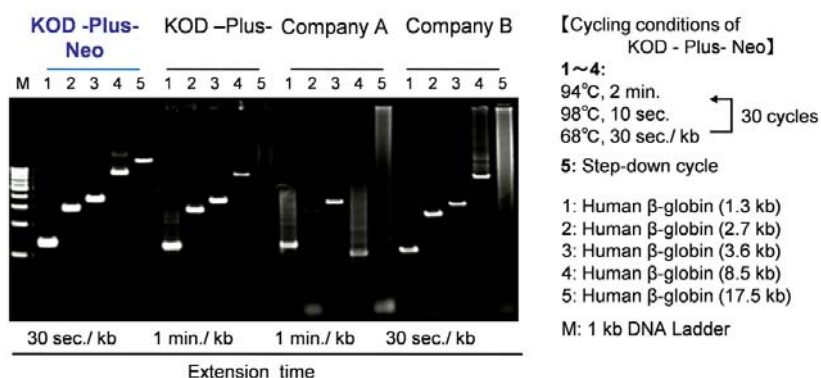
**Performance data 1. PCR fidelity**

Mutation frequency was measured by sequence analysis of human β-globin gene products amplified from human genomic DNA via TA cloning with TArget Clone™ -Plus-. KOD -Plus- Neo showed excellent fidelity and the mutation frequency was equal to that of the previous version of the enzyme (KOD -Plus-).



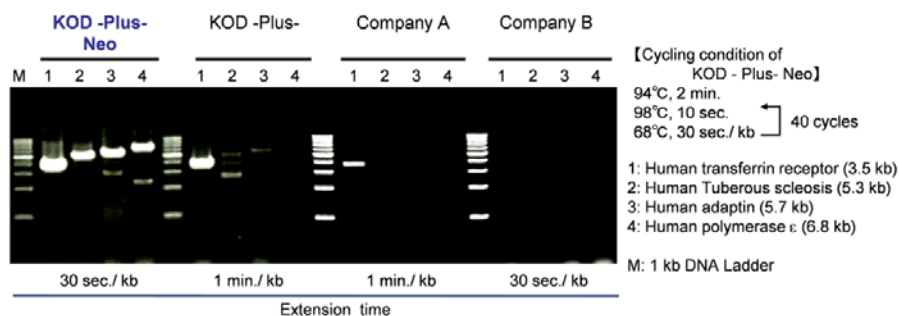
**Performance data 2. Elongation capability**

Targets of various sizes were amplified from human genomic DNA by several PCR enzymes according to the recommended conditions of each enzyme. KOD -Plus- Neo successfully amplified targets up to 17.5 kb.



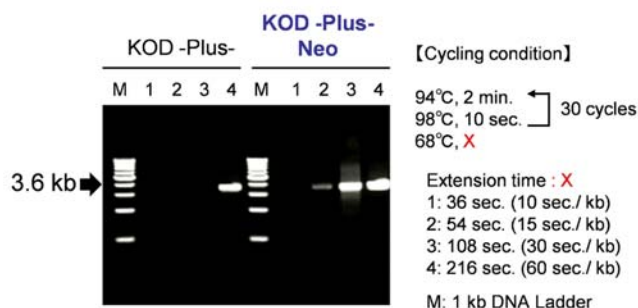
### Performance data 3. Amplification from low copy templates

Four genes were amplified using 0.5 ng cDNA template (RNA equiv.). Templates were synthesized from total RNA of HeLa cells. KOD -Plus- Neo successfully amplified all genes.



### Performance data 4. Elongation rate

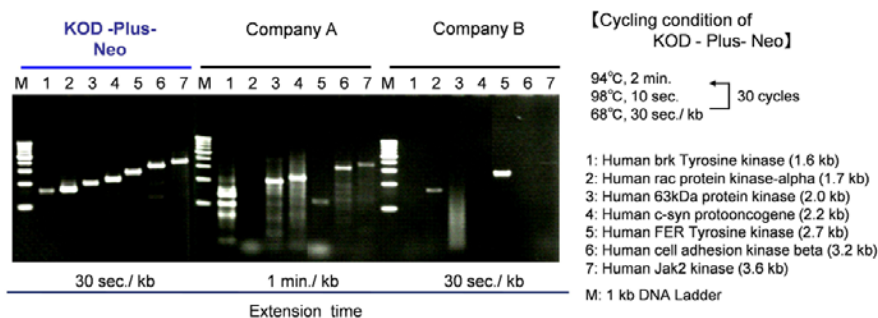
The  $\beta$ -globin gene (3.6 kb) was amplified from human genomic DNA (50 ng) using various extension times. KOD -Plus- Neo can amplify a 3.6 kb target using an extension time of 30 sec/kb.





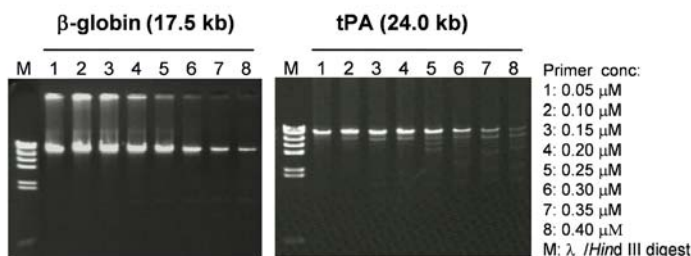
### Application data 1. Amplification of various protein kinase targets

Various protein kinase open reading frames (ORFs) were amplified using cDNA synthesized from total RNA of HeLa cells. KOD -Plus- Neo successfully amplified all targets.



### Application data 2. Amplification of long targets

Long targets were amplified from human genomic DNA using various concentrations of primers. Excessive amounts of primer inhibit the amplification. Therefore, long targets (>10 kb) should be amplified using lower primer concentrations of approximately 0.15  $\mu$ M.



#### 【Cycling condition】

##### $\beta$ -globin (17.5 kb)

:Step-down cycle (Extension time: 30 sec./kb)

##### tPA (24.0 kb)

:Step-down cycle (Extension time: 60 sec./kb)

## [ 8 ] Troubleshooting

Symptom	Cause	Solution
No PCR product/low yield	Cycling conditions are not suitable.	Using the 3-step cycle, lower annealing temperature incrementally to a maximum of $T_m-5-10^{\circ}\text{C}$ .
		Prolong the extension time to 1 min/kb.
		Increase the number of cycles by 2-5 cycles.
	Mg concentration is low.	Increase the Mg concentration up to 2 mM.
	High GC content of target sequence.	Add DMSO 2-5%.
		[See Cycling conditions]
		Decrease the primer concentration incrementally down to 0.15 $\mu\text{M}$ .
	Quality and/or quantity of primers is not sufficient.	Use fresh primers.
Redesign primers.		
Check the quality of template DNA. RNA inhibits amplification.		
Quality and/or quantity of template DNA is not sufficient.	Increase the amount of template DNA.	
	Increase enzyme concentration up to 1.5-2.0 U/50 $\mu\text{l}$ .	
Enzyme concentration is low.		
Smearing/extra band	Cycling conditions are not suitable.	Decrease the number of cycles by 2-5 cycles.
		Change from 3-step cycle to 2-step cycle.
		Change from 2-step cycle to Step-down cycle.
	Quality of primers is not sufficient.	Use fresh primers.
		Redesign primers.
	Too much template DNA.	Reduce the amount of template DNA.
	Too much Mg.	Reduce $\text{MgSO}_4$ incrementally down to 1.0 mM.
Too much enzyme.	Reduce enzyme concentration to 0.5-0.8 U/50 $\mu\text{l}$ .	
Poor TA cloning efficiency.	PCR products have blunt-ends.	Clone the PCR products according to general blunt-end cloning guidelines. Use TArget clone™ -Plus- (Code No.TAK-201) [See Related products].

## [ 9 ] Reference

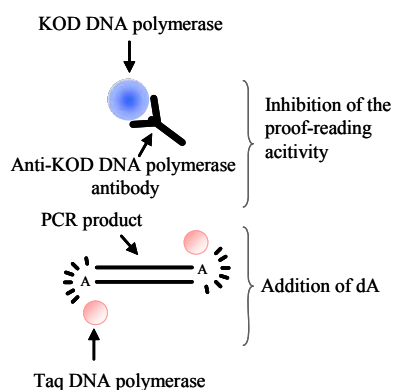
- 1) Takagi M, Nishioka M, Kakihara H, Kitabayashi M, Inoue H, Kawakami B, Oka M, and Imanaka T., *Appl Environ Microbiol.*, 63: 4504-10 (1997)
- 2) Hashimoto H, Nishioka M, Fujiwara S, Takagi M, Imanaka T, Inoue T and Kai Y, *J Mol Biol.*, 306: 469-77 (2001)
- 3) Mizuguchi H, Nakatsuji M, Fujiwara S, Takagi M and Imanaka T, *J Biochem.*, 126: 762-8 (1999)
- 4) Fujii S, Akiyama M, Aoki K, Sugaya Y, Higuchi K, Hiraoka M, Miki Y, Saitoh N, Yoshiyama K, Ihara K, Seki M, Ohtsubo E and Maki H, *J. Mol. Biol.*, 289: 835-850 (1999)

## [ 10 ] Related products

Product name	Package	Code No.
<b>TARget Clone™ -Plus-</b>	10 reactions	TAK-201
<b>10x A-attachment mix</b>	25 reactions	TAK-301
<b>Ligation high Ver.2</b>	750 µl (100 reactions)	LGK-201

TARget Clone™ -Plus- is a high efficient TA cloning kit. The kit can be applied to the TA cloning of blunt-end PCR products amplified using KOD -Plus- [Code No. KOD-201], KOD -Plus- Neo [Code No. KOD-401] or KOD FX [Code No. KFX-101]. The kit contains pTA2 Vector, 2x Ligation Buffer, T4 DNA Ligase and 10x A-attachment Mix.

10 x A-attachment mix is a reagent comprising anti-KOD DNA polymerase antibody specific to KOD 3'→5' exonuclease activity (proof-reading activity), as well as Taq DNA polymerase, which exhibits terminal transferase activity. PCR products from KOD -Plus- [Code No. KOD-201] and KOD FX [Code No. KFX-101] possess blunt ends due to 3'→5' exonuclease activity of the KOD DNA polymerase. The 10 x A-attachment mix allows for PCR products to acquire overhanging dA at the 3'-ends. Products with 3'-dA overhangs can be directly cloned into arbitrary T-vectors using ligation reagents, such as Ligation high Ver.2 [Code No. LGK-201].



**Fig. Principle of the 10 x A-attachment mix**



**NOTICE TO PURCHASER: LIMITED LICENSE**

Use of this product is covered by one or more of the following US patents and corresponding patent claims outside the US: 5,079,352, 5,789,224, 5,618,711, 6,127,155 and claims outside the US corresponding to US Patent No. 4,889,818. The purchase of this product includes a limited, non-transferable immunity from suit under the foregoing patent claims for using only this amount of product for the purchaser's own internal research. No right under any other patent claim (such as the patented 5' Nuclease Process claims in US Patents Nos. 5,210,015 and 5,487,972), no right to perform any patented method, and no right to perform commercial services of any kind, including without limitation reporting the results of purchaser's activities for a fee or other commercial consideration, is conveyed expressly, by implication, or by estoppel. This product is for research use only. Diagnostic uses under Roche patents require a separate license from Roche. Further information on purchasing licenses may be obtained by contacting the Director of Licensing, Applied Biosystems, 850 Lincoln Centre Drive, Foster City, California 94404, USA.

---

**JAPAN**

TOYOBO CO., LTD.  
Tel(81)-6-6348-3888  
[www.toyobo.co.jp/e/bio](http://www.toyobo.co.jp/e/bio)  
tech\_osaka@toyobo.jp

**CHINA**

TOYOBO Bio-Technology, CO., LTD.  
Tel(86)-21-58794900.4140

**FOR RESEARCH USE ONLY. NOT FOR HUMAN OR DIAGNOSTIC USE.**